



LIGHT OFFICES IN A LANDSCAPED SETTING





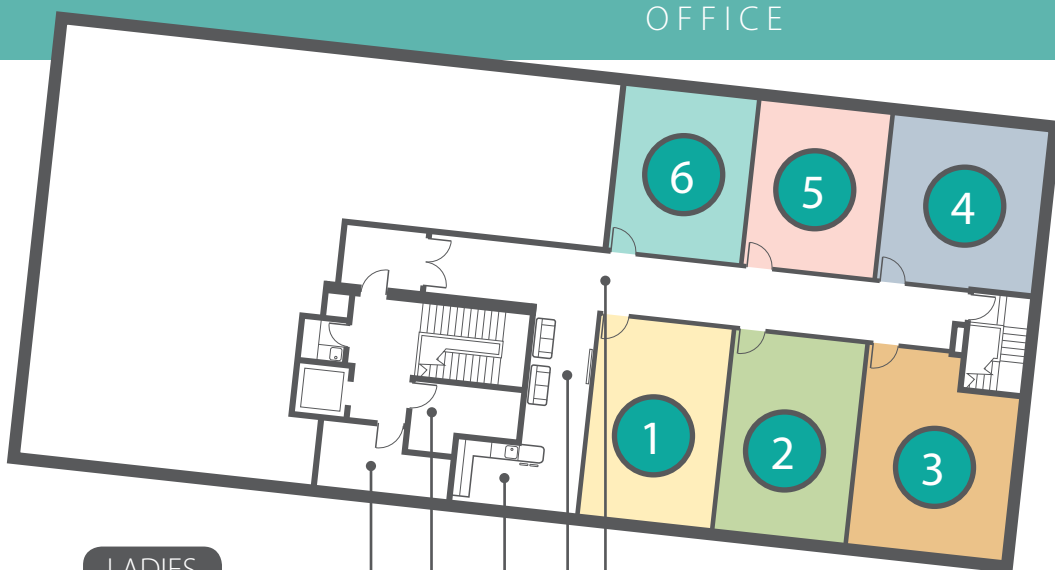
## KITCHEN

## OFFICE

**The layout shows six office spaces available.**

Also these spaces are flexible. If requiring more spaces, the partition walls can be removed, linking offices together.

From **301sqft to 2,140sqft**



LADIES

GENTS

KITCHEN

LOUNGE

CCTV

All the fully serviced offices on this floor have short term flexible leases.





LOUNGE AREA



RECEPTION

# A Stylish Centre for Business

Hello House is a three storey detached building providing modern office accommodation. The building is set in landscaped surroundings, has a gated car park to the rear and CCTV cameras in operation.

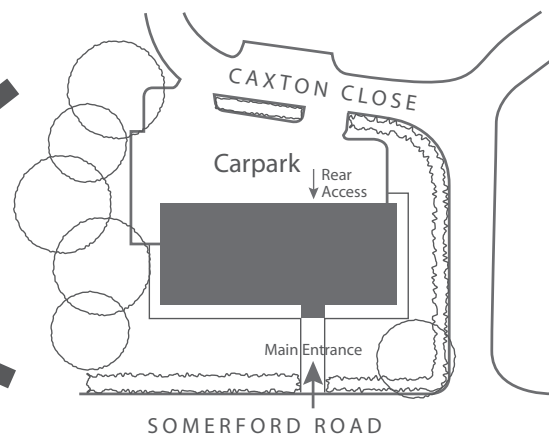
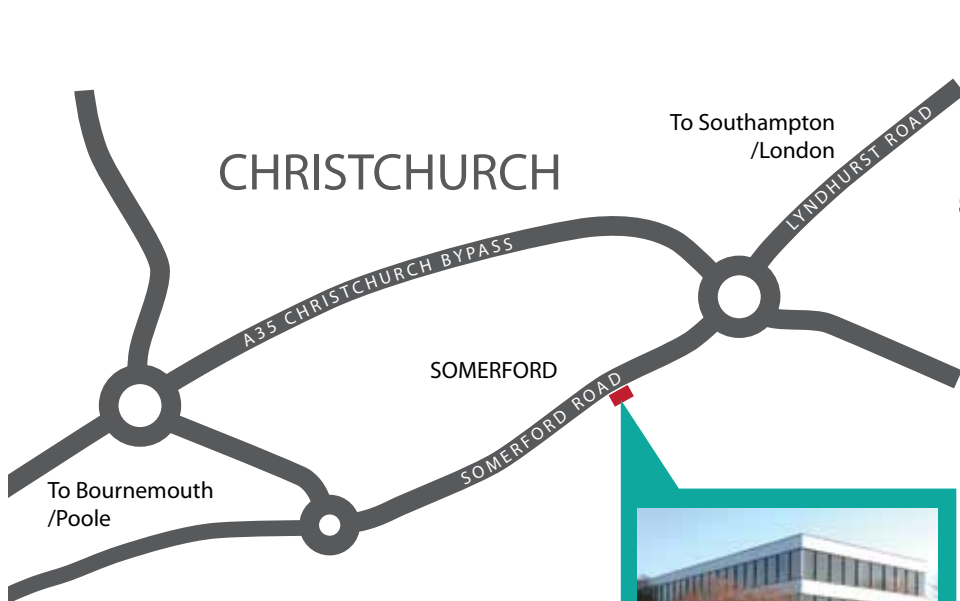
A shared ground floor reception is accessed from Somerford Road via a paved approach with automatically operated sliding doors providing a modern and stylish entrance. This is air-conditioned, benefits from security cameras, has an intercom system to all office suites and offers a comfortable waiting area. Also all the offices have ready to use BT phone and broadband connections.

There is a lift, M and F cloakroom facilities at 1st and 2nd floor levels and a disabled WC on the ground floor.

“Its fantastic working in a light relaxing office”

Mark Coleman **SDS Group**





For more info please visit our website  
[www.hellobusinesscentre.co.uk](http://www.hellobusinesscentre.co.uk)

Make an appointment  
**CALL 01202 620776**

Hello House, 135 Somerford Road, Christchurch, Dorset BH23 3PH

